

# WHITE PINE RESOURCES INC.

## Financial Summary

(as at 04/28/08)

TSX.V WPR	
Market Cap	\$45M
52-wk high	\$0.60
52-wk low	\$0.20
Current	\$0.45

## Balance Sheet

(as at 04/28/08)

Cash	\$15.0M
Total debt	\$0

## Corporate Information

WPR Inc.  
141 Adelaide St. West  
Suite 301  
Toronto, Ontario M5H 3L5  
Tel: (416) 628-5905  
Fax: (416) 962-3301  
www.wprres.com

## Management Team

John Tait  
President & CEO  
Mario Miranda  
CFO

## Consultants

John Harvey  
Robert D. Cudney

## Directors

Thomas Pladsen  
Donald Rankin  
Robert Pollock  
Victor Vallance  
Kevin O'Connor

## Corporate Profile

Incorporated in 1979 and headquartered in Toronto Ontario, WPR is a junior resource company engaged in the exploration and development of key assets with over 37,000 hectares in the highly prolific "Ring of Fire" mining camp in the James Bay Lowlands of Ontario, Canada.

Through key joint ventures with Noront Resources, Metalex Ventures and Macdonald Mines, WPR is mounting an aggressive full sequence exploration program on a highly prospective portion of the "Ring of Fire" mineralized zone at the camp.

Initial drilling will begin in the second quarter of 2008.

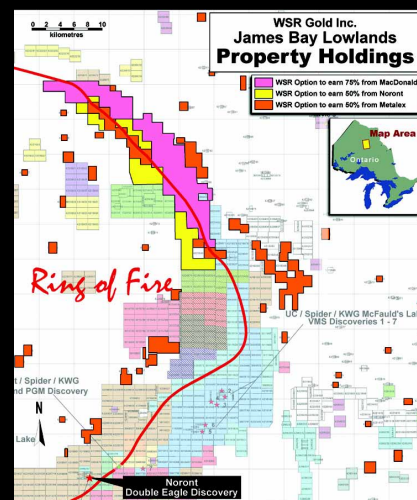
## Current Exploration Projects

The James Bay Lowlands area in Northern Ontario, known as the "Ring of Fire" appears to be the most significant base metal play in Canada since the Voisey's Bay discovery in Labrador in September 1993. Investors continue to speculate on the Ring of Fire, and many juniors are lining up to stake their claim to Noront Resources Ltd's (TSX.V: NOT) rich nickel-copper discovery found in September 2007.

Noront's discovery of a second massive sulphide occurrence located two kilometers southwest of its Eagle One lends credence to the notion of this region becoming the next big nickel-copper play.

Several drill programs are to commence in May 2008, including one from WPR. **With a budget of over \$8 million for 2008, WPR is one of the most aggressive explorers in the area.** It is anticipated that the area will undergo significant drilling by 5 or 6 companies by the Spring of 2008.

According to IBK, the combined budgets of companies exploring on the Ring already total \$60 million for 2008 and it is believed that \$250 million will be spent on exploration over the next five years.



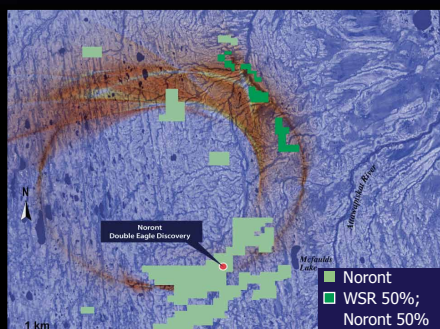
# WHITE PINE RESOURCES INC.

## Noront Resources JV

Option to acquire **50%**  
 interest in 15 claim blocks

**\$5M** investment over 3 years

**4,400** hectares

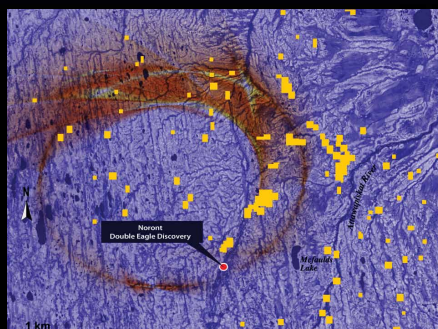


## Metalex Ventures JV

Up to **50%** interest in selected  
 Metalex claim blocks

**\$20M** over 4 years

**21,440** hectares

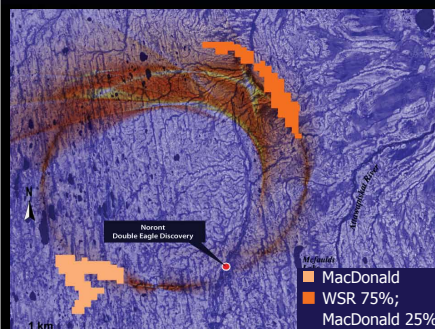


## Macdonald Mines JV

**75%** interest  
 in 51 claim blocks

**\$2.5M** 2-year commitment

**11,200** hectares



## Investment summary

- Major interest in significant land in emerging world class McFauld's Lake camp
- Joint venture agreements with 3 leading companies
- Excellent infrastructure and aggressive drilling program in place for 2008
- Experienced management team
- Well funded

## McFauld's Lake Area Comparables\*

Company	Symbol	Shares outstanding	Closing Price (Apr. 28/08)	Market Capitalization	High	Low
<b>WPR GOLD</b>	<b>WPR-V</b>	<b>111,515,983</b>	<b>\$0.45</b>	<b>\$50,182,192</b>	<b>\$0.60</b>	<b>\$0.20</b>
Noront Resources	NOTV	125,913,082	\$4.58	\$576,681,916	\$7.42	\$0.29
MacDonald Mines	BMK-V	139,782,900	\$0.31	\$43,332,699	\$1.32	\$0.06
Metalex Ventures	MTX-V	93,391,059	\$0.24	\$22,413,854	\$0.55	\$0.23
Probe Mines Limited	PRB-V	33,624,805	\$0.63	\$21,183,627	\$1.55	\$0.155

\* Source: TSX (www.tsx.com)